

---

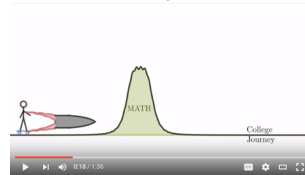
## What is EdReady?

EdReady is a free learning platform that motivated students can use to fill in the gaps in their math knowledge. EdReady contains videos and learning materials to help you learn the content that you would normally learn by taking Math 95M at NSC.

Students who would like to improve their placement from the Accuplacer test can work through EdReady to place into a higher class. (In the long run we would like to phase out the Accuplacer test altogether and replace it with EdReady.)

### EdReady Videos

[NSC EdReady Intro](#)



[EdReady Overview](#)



---

## Why EdReady?

It saves you time and money. **EdReady is free.** Math 095M costs more than \$800 and takes a whole semester. Any student who is sufficiently motivated to work through the EdReady material without needing a teacher to prod them to action can succeed with EdReady.

---

## How do I get started?

First determine whether you plan to continue on to Calculus. Go to [nsc.edready.org](https://nsc.edready.org) and follow the instructions to create an account. Enter the key **placement** (or **placementcalculus** for students who plan to take calculus eventually) and click submit. Then click Get Started!

### Welcome to EdReady!

EdReady will help you prepare for college and career goals.



🔍 Have you been given a key?

Submit

*If you don't have a key you can move on to choose a goal.*

Get Started!

Each time you log in you will work on the goal "Math 120 Placement" (or "Math 126 Placement" for students on the calculus track). Select that goal and click **Go to Goal**. Click on **Start Assessment** to take your initial test to see what you need to work on.

**Math 120 Placement**

This goal is only for students who will be taking Math 120. If you need to eventually take calculus, then you are in the wrong goal. Go back to [nsc.edready.org](https://nsc.edready.org) and read the instructions.

0 100

**Math 120 Placement**  
View details ▶

Start assessment

Over time you can view your progress as your score rises.

## NSC EdReady

---

### How will my EdReady score affect my placement?

You can get a default placement using your ACT or SAT math score. Then you can work through EdReady to improve your placement. Everything must be completed manually at this time, so after completing EdReady you will need to notify the Registrar at [mathplacement@nsc.edu](mailto:mathplacement@nsc.edu) so that we can verify your progress and grant permission for you to enroll in a class. At the time of your email, you must provide your **NSHE ID**, the **Course Section**, and the **Semester** for the math class you would like to enroll in. Please note that **it may take from 7-10 days for us to process this score.**

<u>Math 120 Placement</u>		<u>Math 126 Placement</u>	
EdReady Score	Class Placement	EdReady Score	Class Placement
0-79	Math 95M	0-79	Math 95M
80-99	Math 120E or Stat 152E	80-99	Math 126E
100	Math 120 or Stat 152	100	Math 126

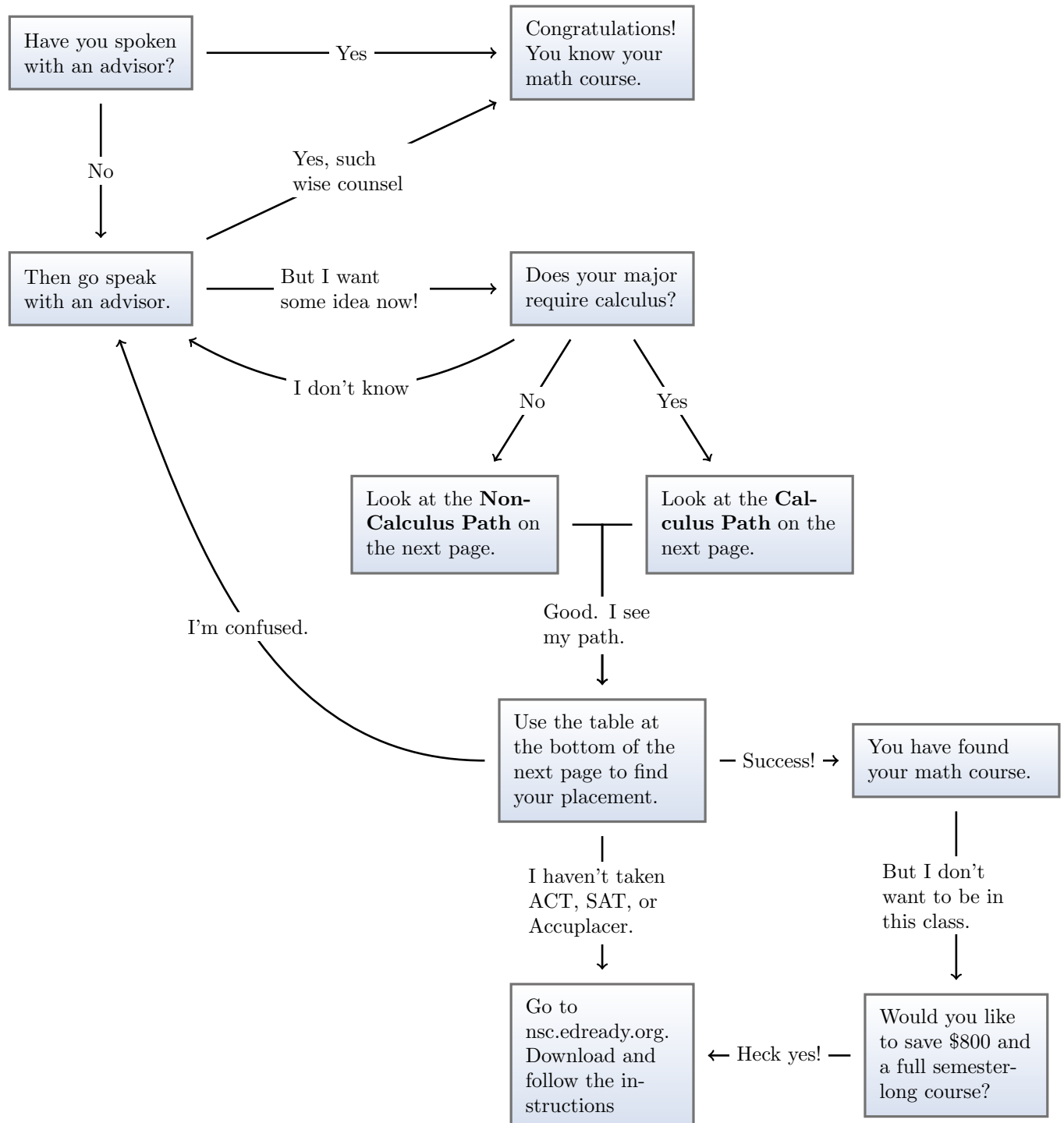
---

### What if I have questions?

For questions about EdReady you can read the FAQ on EdReady. (The link to the FAQ can be found in the student dashboard down below the face when you are logged into EdReady.)

For questions about the mathematical content you can send an email to [serge.ballif@nsc.edu](mailto:serge.ballif@nsc.edu). Be sure to ask meaningful questions that spell out what is being asked and how you approached the solution. Don't just refer to a question type or number because the problems are generated algorithmically, so no two students get the same questions.

# Which math course should I take?



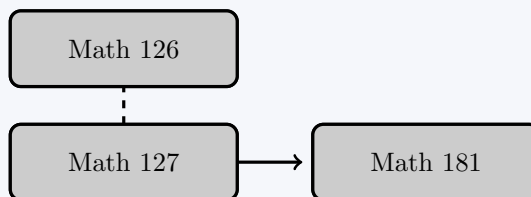
## NSC Math Course Sequence

### Calculus Path

Calculus Path for students who test into Math 95 or Math 96.



Calculus Path for students who test into Math 126. Take Math 126 and 127 concurrently.

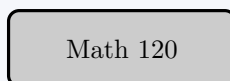


### Non-Calculus Path

Non-Calculus Path for students who test into Math 95 or Math 96.



Non-Calculus Path for students who test into Math 120.



**Math 95M** (5 credits) This mastery based course covers foundational mathematics topics up through elementary algebra.

**Math 96A** (1 credit) Students who pass Math 95M can take Math 96A concurrently with Math 120 as a 1-credit supplemental course.

**Math 96D** (2 credits) Students who pass Math 95M can take Math 96D concurrently with Math 126 as a 2-credit supplemental course

**Math 120** (3 credits) This course covers topics in statistics, consumer mathematics, and modeling.

**Math 120E** (4 credits) Students register for this course to take Math 120 and Math 96A together.

**Math 126** (3 credits) College Algebra is for students who plan to go on to calculus.

**Math 126E** (5credits) Students register for this course to take Math 126 and Math 96D together.

**Math 127** (3 credits) Trigonometry can be taken concurrently with Math 126 (though not with Math 126E).

**Math 181** (4 credits) Calculus depends heavily on the skills of Math 126 and 127.

Placement scores are below. Students who want to advance beyond their initial placement can use EdReady (at [nsc.edready.org](http://nsc.edready.org)) to improve their initial placement. (The EdReady tests for Math 120 and Math 126 are different.)

	Math 95M	Math 96A/120E	Math 120	Math 96D/126E	Math 126	Math 181
ACT Math	≤ 19	≤ 21	≥ 22	≤ 24	≤ 27	≥ 28
SAT Math	≤ 450	≤ 490	≥ 500	≤ 550	≤ 620	≥ 630
Accuplacer (QRAS)	≤ 249	≥ 250	≥ 263	≥ 263 &	≥ 263 &	≥ 263 &
Accuplacer (AAF)				≥ 237	≥ 250	≥ 290
EdReady	≤ 79	≤ 99	100	≤ 99	100	